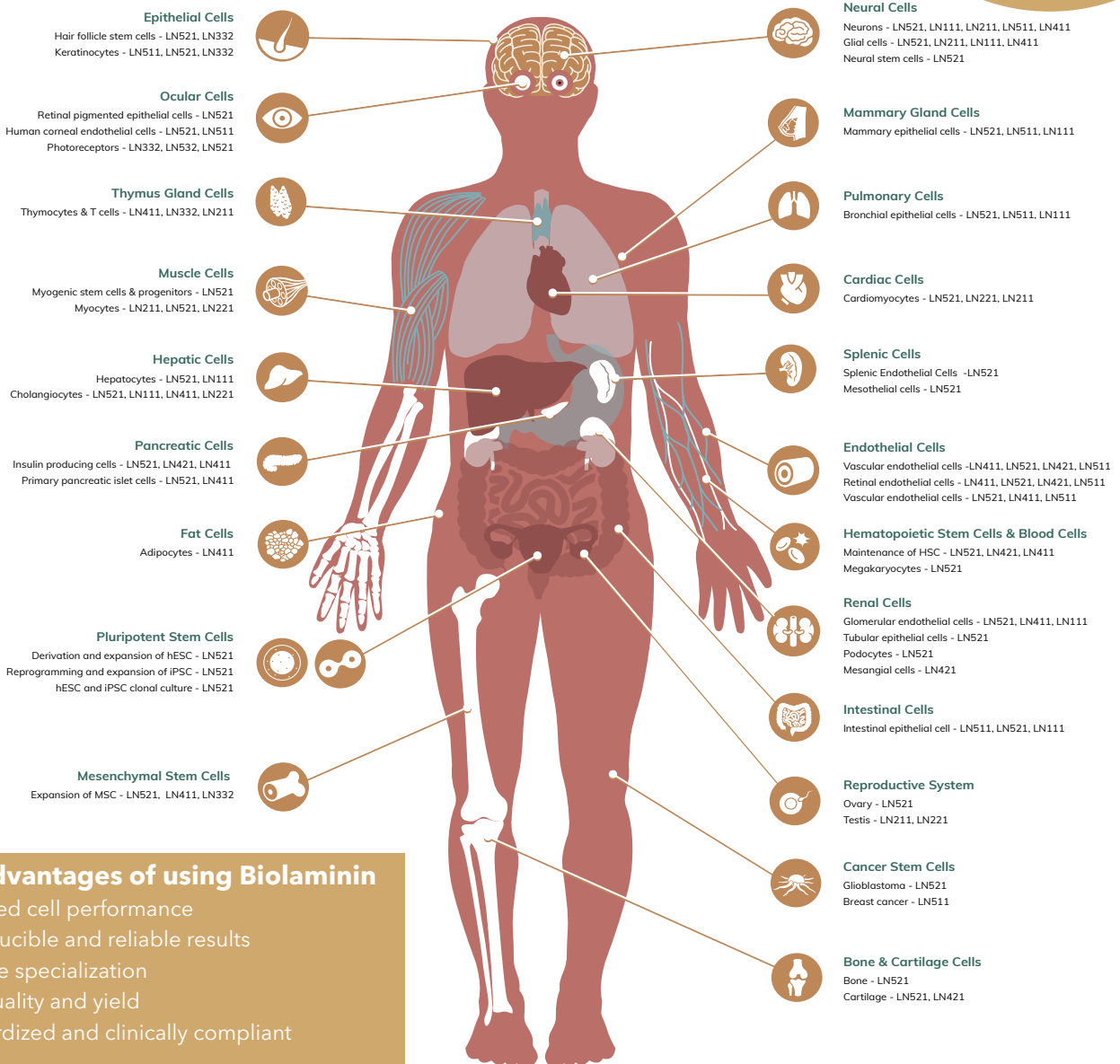


# Tissue-specific cell culture matrices

Imitate the natural cell-matrix interactions for improved cell functionality

The chemically defined and animal origin-free laminin cell culture matrices, Biolaminin<sup>®</sup>, allow you to imitate the natural cell-matrix interaction in vitro. Laminins are key components of the extracellular matrix. Through their interactions with specific receptors, laminins trigger the authentic cellular responses, pivotal for cell anchorage, survival, proliferation, migration, organization and specialization, leading to improved cell functionality.

We offer an expansive portfolio of recombinant laminin proteins for a variety of applications, including reliable expansion of pluripotent cells and differentiation and maintenance of specialized cell types



## Main advantages of using Biolaminin

- ✓ Improved cell performance
- ✓ Reproducible and reliable results
- ✓ Effective specialization
- ✓ High quality and yield
- ✓ Standardized and clinically compliant